

# Gateway monitor

---

# User Guide



Gateway®





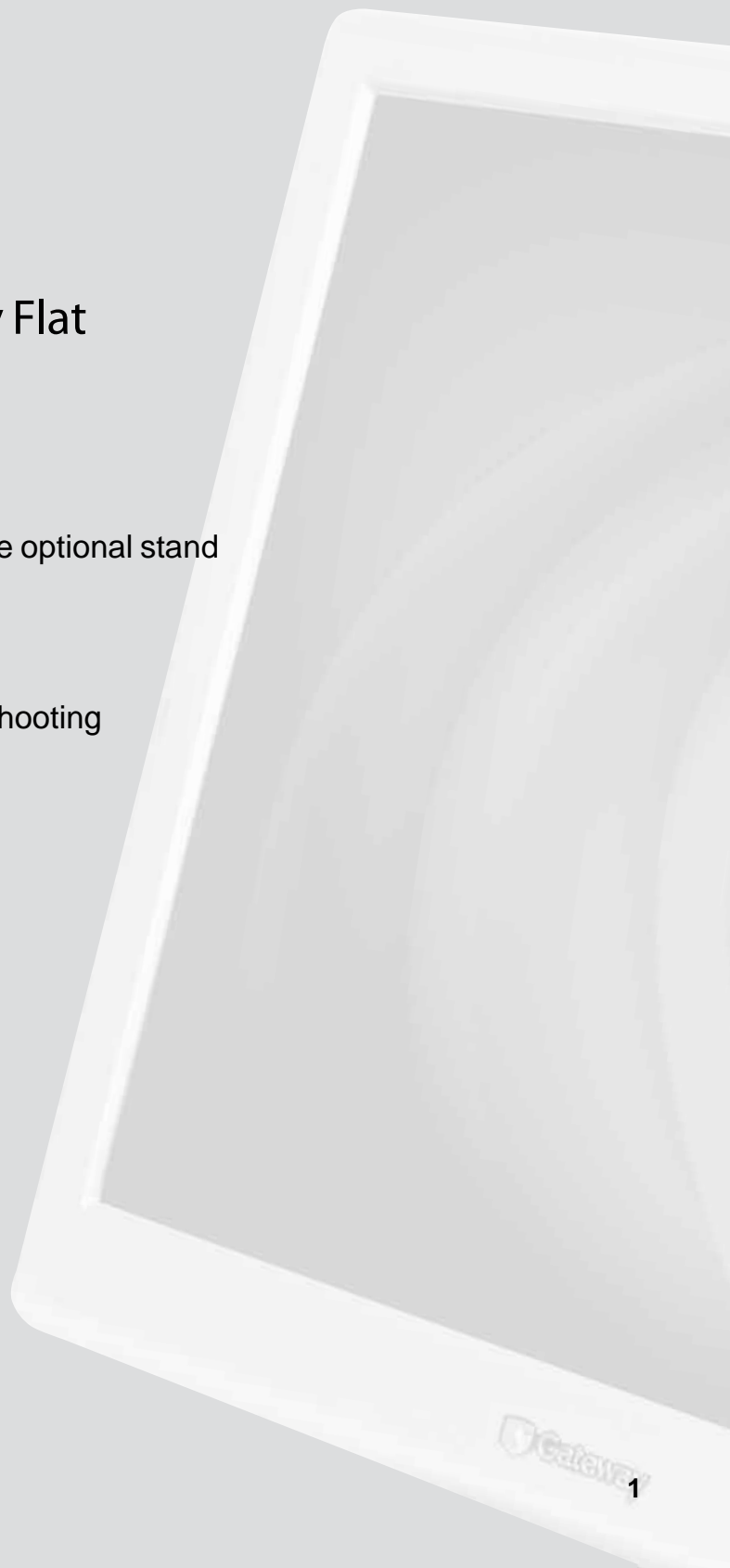
# Contents

<b>Using Your Gateway Flat Panel Monitor</b> .....	<b>1</b>
Connecting the monitor .....	2
Attaching the optional stand .....	4
Adjusting the height-adjustable stand .....	7
Starting the monitor .....	8
Adjusting monitor settings .....	9
Monitor controls .....	9
On-screen display options .....	10
Computer controls .....	13
Video modes .....	17
Power management .....	19
ENERGY STAR .....	19
Energy declaration .....	19
Maintenance .....	20
Troubleshooting .....	20
No power .....	20
No picture .....	21
Display colors are wrong .....	21
Picture has shadows or “ghosts” .....	22
Color is not uniform .....	22
Image is not sized or centered correctly .....	22
The monitor has pixels that are always dark or too bright .....	22
Specifications .....	23
15-inch monitor .....	23
17-inch monitor .....	24
19-inch monitor .....	25
<b>Safety, Regulatory, and Legal Information</b> .....	<b>27</b>



## Using Your Gateway Flat Panel Monitor

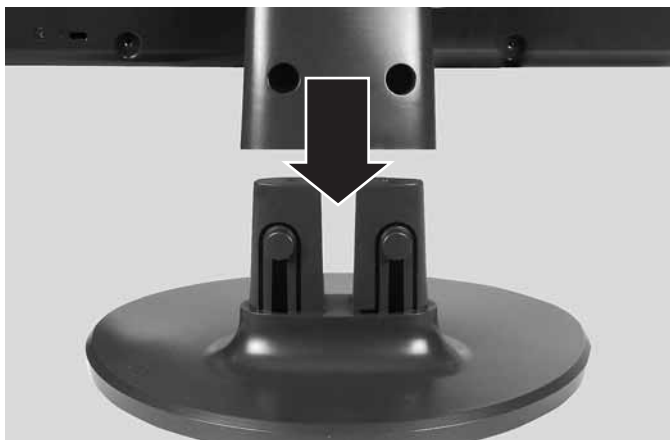
- Connecting the monitor
- Attaching and adjusting the optional stand
- Starting the monitor
- Changing monitor settings
- Maintenance and troubleshooting
- Specifications



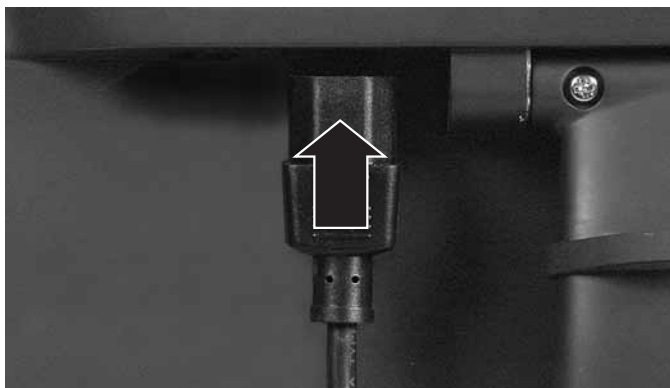
# Connecting the monitor

▶ To connect the monitor:

- 1 Place the monitor base on a table top, then slide the monitor neck down onto the base until it clicks into place.



- 2 Position your computer and the monitor so you can reach the back of each.
- 3 Connect the power cord to the power connector under the back of the display.

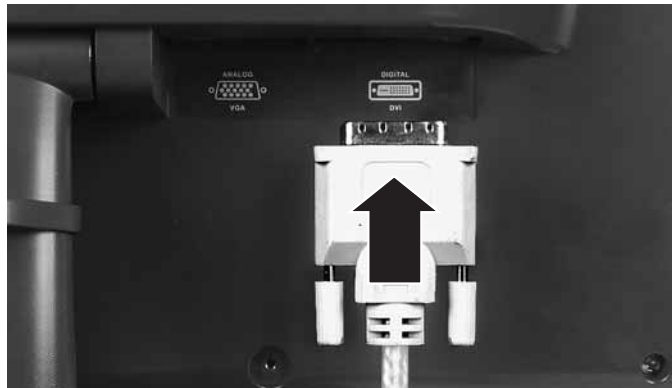


- 4 Connect the blue VGA video cable to the blue video connector under the back of the display.



- OR -

If your computer has a digital video connector (DVI), connect a DVI video cable (not included) to the white connector under the back of the display. You can buy a DVI video cable from [www.gateway.com](http://www.gateway.com).



- 5 Make sure that your computer is turned off, then connect the other end of the video cable to the matching video port on the back of your computer.
- 6 Plug the power cord into a correctly grounded electrical outlet.



# Attaching the optional stand

You can buy a fully adjustable stand from [www.gateway.com](http://www.gateway.com). The stand can be adjusted for height, tilt, pan angle, and screen rotation.



▶ To attach the height-adjustable stand:

- 1 Make sure the monitor is turned off.
- 2 Press the two release buttons on the back of the monitor's original neck, then slide the monitor base out of the neck.
- 3 Place the monitor face-down on a soft, non-marring surface.
- 4 Remove the screw from the neck hinge, then remove the neck from the LCD panel. Do not discard the screw.



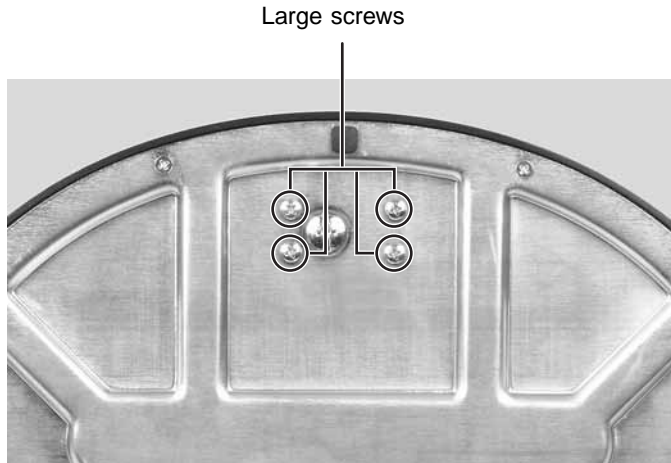
- 5** Attach the hinge cover using the screw you removed from the original neck hinge.
- 6** Remove the four small screws from the back of the LCD panel. Do not discard the four screws.



- 7** Attach the adjustable stand's mounting flange to the LCD panel using the four screws you removed.



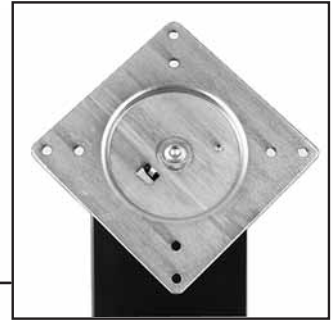
- 8 Use the four large screws provided with the adjustable stand to attach the base to the adjustable stand.



# Adjusting the height-adjustable stand



Tilts from  $-5^{\circ}$  to  $35^{\circ}$



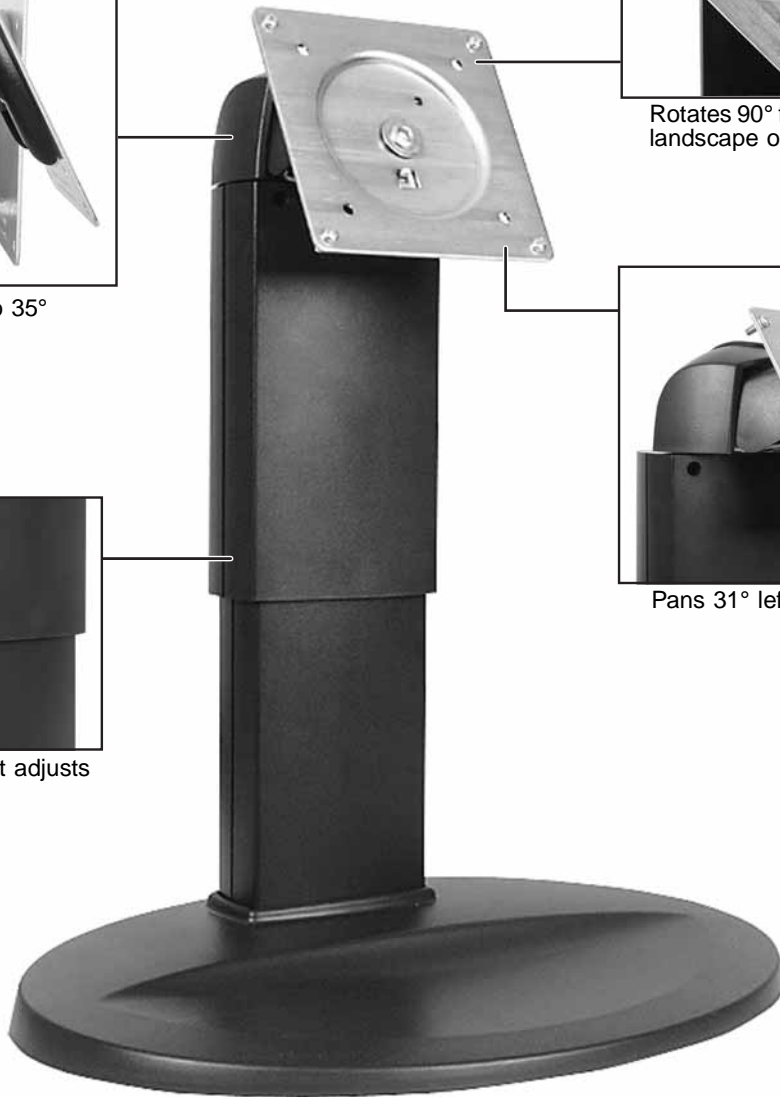
Rotates  $90^{\circ}$  for portrait or landscape orientation



Pans  $31^{\circ}$  left and right



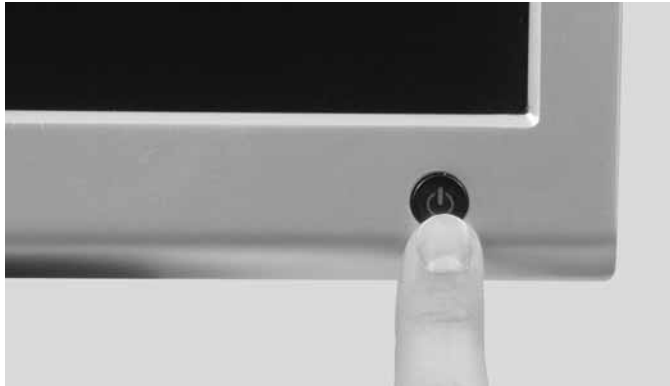
Vertical height adjusts five inches



# Starting the monitor

▶ To start the monitor:

- 1 Press the power button on the front of monitor. The power LED on the power button turns on.



- 2 Turn on your computer.

After your computer is running, the power LED on the monitor's power button should be blue. Allow about 10 seconds for the display image to appear. If the power LED is not blue or you do not see a display image, check the connections. For more troubleshooting information, see "Troubleshooting" on page 20.

- 3 Adjust the tilt of the monitor for the best viewing angle.
- 4 After you see the Windows desktop, press the **Auto** button on the right side of the monitor to automatically adjust your display image to the ideal settings.
- 5 Use the on-screen display (OSD) to adjust other monitor settings. For more information, see "Adjusting monitor settings" on page 9.

## Important



When adjusting the monitor settings, **always** press the **Auto** button before entering the OSD. This will automatically adjust the display image to the ideal settings for the current screen resolution.

For most applications, the best screen resolution is 1280 × 1024.

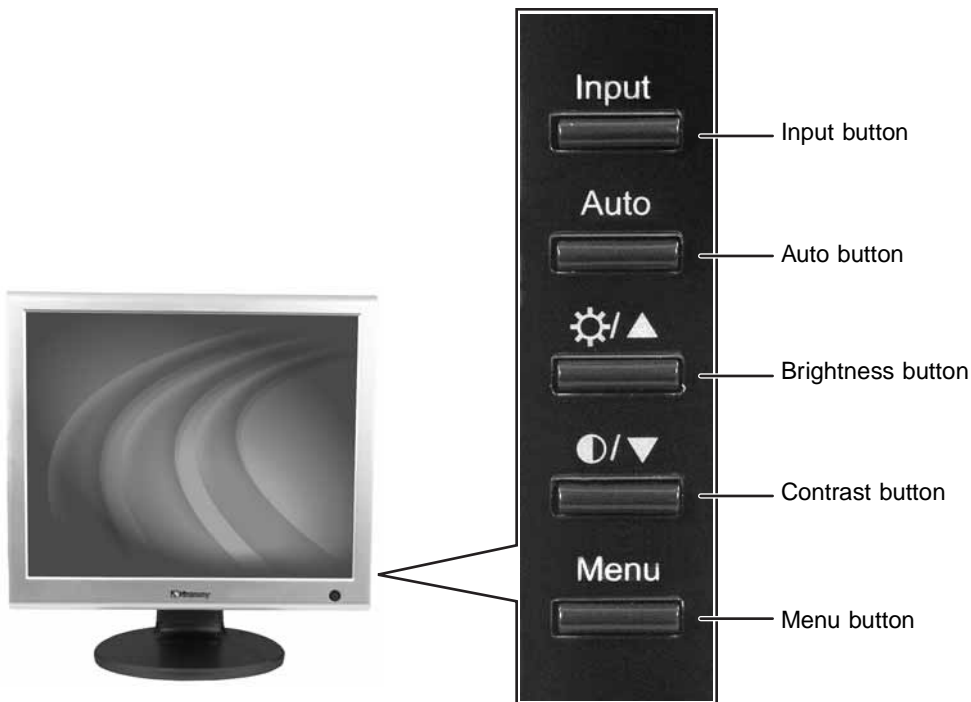


# Adjusting monitor settings

Use the monitor controls (located on the monitor itself) and computer controls (accessible through Windows) to adjust the display image. For more information about computer controls, see “Computer controls” on page 13.

## Monitor controls

This monitor features an on-screen display (OSD) that lets you adjust contrast, brightness, and other settings for the monitor. The monitor saves changes you make to the settings, even if you turn off the monitor.



- **Input**  
Press this button to select the video source.
- **Auto**  
OSD active: Press to open a menu or setting.  
OSD inactive: Automatically optimizes the monitor’s image position, clock, and phase.
- **⚙/▲ (brightness)**  
OSD active: Press to move up through menu selections and adjust OSD options.  
OSD inactive: Press to adjust the brightness.

- **○/▽ (contrast)**  
OSD active: Press to move down through menu selections and adjust OSD options.  
OSD inactive: Press to adjust the contrast.
- **Menu**  
Press to view the OSD. Press again to exit or move to a previous menu.

## On-screen display options

### Adjusting OSD settings

 To adjust the OSD settings:

- 1 Press the **Menu** button. The OSD menu opens.
- 2 Use the **△** and **▽** buttons to highlight a setting, then press the **Auto** button to open the selected menu or setting.
- 3 Use the **△** and **▽** buttons to adjust the setting to the desired level or change the option.
- 4 Press the **Menu** button to return to a previous menu.
- 5 When you have finished making all adjustments, press the **Menu** button at the Main Menu to exit.

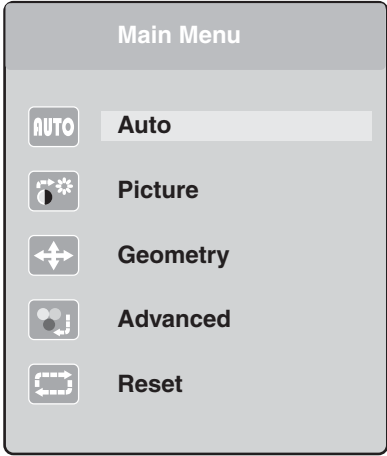
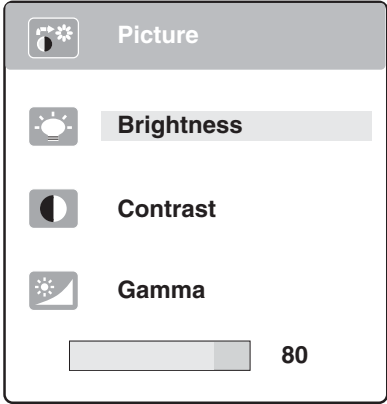
#### **Tips & Tricks**

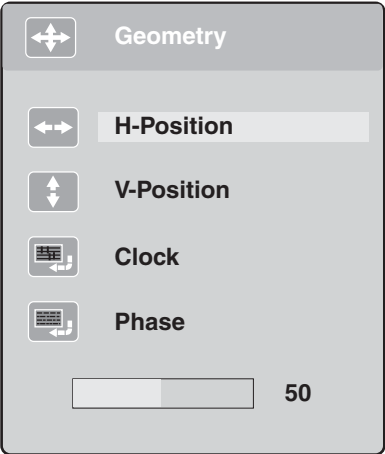
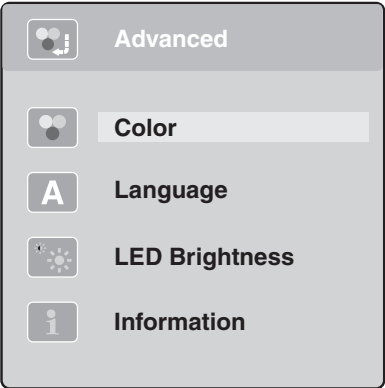


While the OSD is active, on-screen labels appear next to the buttons to help you identify them.



## OSD menus

OSD Menu	Description
<p><b>Main menu</b></p> 	<p><b>Auto</b>—Automatically adjusts your monitor to its optimum settings.</p> <p><b>Picture</b>—Opens the Picture menu, where you can adjust brightness, contrast, and gamma.</p> <p><b>Geometry</b>—Opens the Geometry menu, where you can adjust image size and minimize distortions.</p> <p><b>Advanced</b>—Opens the Advanced menu, where you can adjust color balance, change the OSD language, and display information about current monitor settings.</p> <p><b>Reset</b>—Resets the monitor to its factory settings.</p>
<p><b>Picture menu</b></p> 	<p><b>Brightness</b>—Adjusts the amount of light in the darkest portion of the picture. Use the lowest brightness setting you are comfortable with to maximize the life of the monitor backlights. You may need to readjust brightness after the monitor has warmed up.</p> <p><b>Contrast</b>—Adjusts the level of white between the lightest and darkest portions of an image.</p> <p><b>Gamma</b>—Customizes the gamma level. High gamma levels increase white levels and low gamma levels increase contrast.</p>

OSD Menu	Description
<b>Geometry menu</b>	<b>H-Position</b> —Moves the display image left and right. <b>V-Position</b> —Moves the display image up and down. You can also press the <b>Auto</b> button to configure the vertical and horizontal position automatically. <b>Clock</b> —Minimizes any vertical bars or stripes visible on the screen background. The horizontal screen size will also change. <b>Phase</b> —Minimizes any horizontal distortion and clears or sharpens the displayed characters.
	
<b>Advanced menu</b>	<b>Color</b> —Customizes the color levels. <b>Language</b> —Changes the language of the OSD. <b>LED Brightness</b> —Changes the brightness of the Standby and Power LED to Day Mode or Nite Mode. <b>Information</b> —Displays current screen resolution.
	

# Computer controls

Color depth, screen resolution, and changing display fonts to ClearType are three of the most basic monitor settings you may need to change.

## Adjusting the color depth

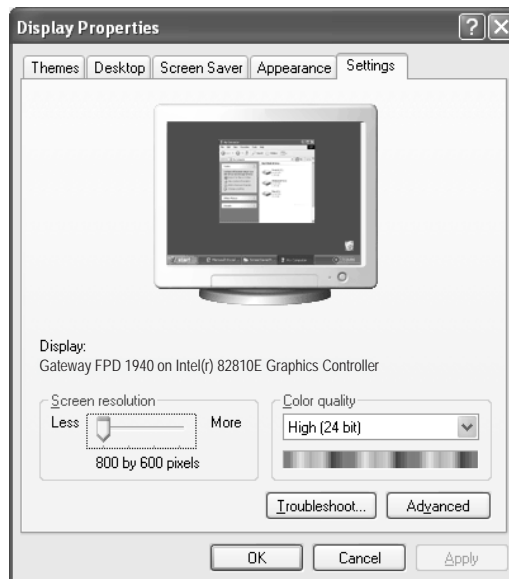
*Color depth* is the number of colors your video card uses. Most images look best displayed with the maximum number of colors available.

Windows lets you choose from several color depth settings for the monitor. We recommend that you use the 32-bit True Color setting or the highest setting available at all times.

If the color in your images seems “false” or “jumpy,” especially after you have played a game or run a video-intensive program, check the color depth setting and return it to 32-bit True Color, if necessary.

▶ To change the color depth:

- 1 Click **Start**, then click **Control Panel**. The *Control Panel* window opens. If your Control Panel is in Category View, click **Appearance and Themes**.
- 2 Click/Double-click the **Display** icon. The *Display Properties* dialog box opens.
- 3 Click the **Settings** tab.




- 4 Click the arrow button to open the **Color quality** list, then click the color depth you want.
- 5 Click **OK**, then click **Yes** to save your changes.



**Help and Support**



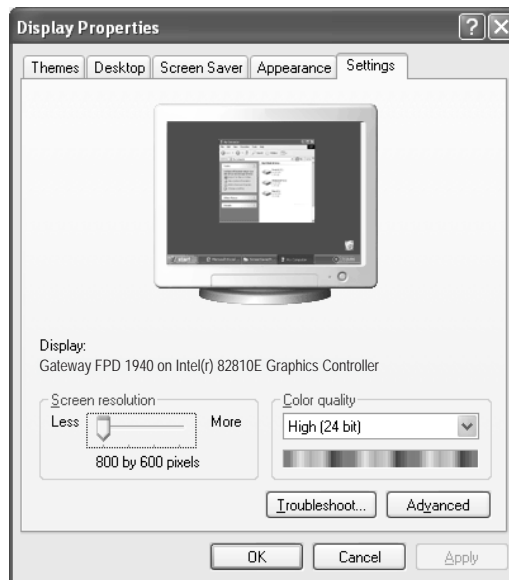
For more information about adjusting monitor settings, click **Start**, then click **Help and Support**. Type the keyword **changing display settings** in the **Search** box Search  , then click the arrow.

## Adjusting the screen resolution

You can change the screen resolution to a size you prefer. For example, you can increase the resolution to fit more icons on your desktop, or you can decrease the resolution to make reading and identifying objects on the monitor easier. The higher the resolution, the smaller individual components of the screen (such as icons and menu bars) appear.

▶ To change the screen resolution:

- 1 Click **Start**, then click **Control Panel**. The *Control Panel* window opens. If your Control Panel is in Category View, click **Appearance and Themes**.
- 2 Click/Double-click the **Display** icon. The *Display Properties* dialog box opens.
- 3 Click the **Settings** tab.



- 4 Drag the **Screen resolution** slider to the size you prefer.
- 5 Click **OK**, then click **Yes** to save your changes.



### Help and Support



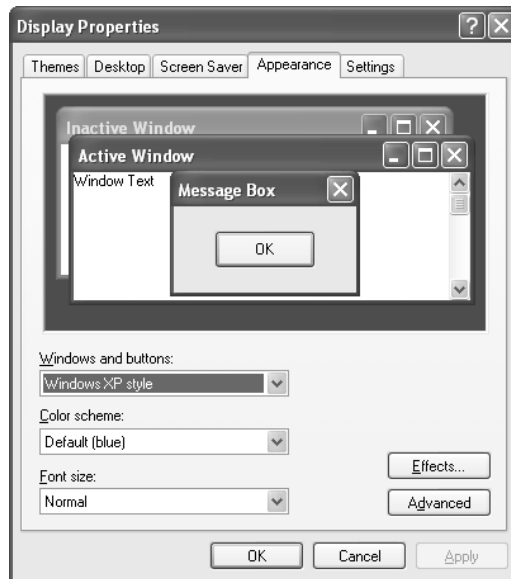
For more information about adjusting screen resolution, click **Start**, then click **Help and Support**. Type the keyword **changing screen resolution** in the **Search** box Search  →, then click the arrow.

## Clarifying screen fonts

You can change the display fonts to ClearType for smoother screen fonts.

▶ To change the display fonts to ClearType:

- 1 Click **Start**, then click **Control Panel**. The *Control Panel* window opens. If your Control Panel is in Category View, click **Appearance and Themes**.
- 2 Click/Double-click the **Display** icon. The *Display Properties* dialog box opens.
- 3 Click the **Appearance** tab.



- 4 Click the **Effects** button. The *Effects* dialog box opens.
- 5 Click to select the **Use the following method to smooth the edges of screen type** check box.
- 6 Click the arrow to open the list, then click **ClearType**.
- 7 Click **OK**.



## Video modes

Your monitor supports several video modes. If you do not use the best mode for the monitor, the display image may look slightly “fuzzy.”

### 15-inch monitor

Mode	Mode name and resolution	Horizontal frequency (KHz)	Vertical frequency (Hz)
1	VGA 720 × 400	31.469	70.087
2	VGA 640 × 480	31.469	59.941
3	VESA 640 × 480	37.861	72.810
4	VESA 640 × 480	37.500	75.000
5	VESA 800 × 600	35.156	56.250
6	VESA 800 × 600	37.879	60.317
7	VESA 800 × 600	48.077	72.188
8	VESA 800 × 600	46.875	75.000
9	VESA 1024 × 768	48.363	60.004
10	VESA 1024 × 768	56.476	70.069
11	VESA 1024 × 768	60.023	75.029

### 17-inch monitor

Mode	Mode name and resolution	Horizontal frequency (KHz)	Vertical frequency (Hz)
1	VGA 720 × 400	31.469	70.087
2	VGA 640 × 480	31.469	59.941
3	VESA 640 × 480	37.861	72.810
4	VESA 640 × 480	37.500	75.000
5	VESA 800 × 600	35.156	56.250
6	VESA 800 × 600	37.879	60.317
7	VESA 800 × 600	48.077	72.188
8	VESA 800 × 600	46.875	75.000
9	VESA 1024 × 768	48.363	60.004
10	VESA 1024 × 768	56.476	70.069
11	VESA 1024 × 768	60.023	75.029
12	VESA 1280 × 1024	63.980	60.020
13	VESA 1280 × 1024	79.976	75.025

## 19-inch monitor

Mode	Mode name and resolution	Horizontal frequency (KHz)	Vertical frequency (Hz)
1	VGA 720 × 400	31.469	70.087
2	VGA 640 × 480	31.469	59.941
3	VESA 640 × 480	37.861	72.810
4	VESA 640 × 480	37.500	75.000
5	VESA 800 × 600	35.156	56.250
6	VESA 800 × 600	37.879	60.317
7	VESA 800 × 600	48.077	72.188
8	VESA 800 × 600	46.875	75.000
9	VESA 1024 × 768	48.363	60.004
10	VESA 1024 × 768	56.476	70.069
11	VESA 1024 × 768	60.023	75.029
12	VESA 1280 × 1024	63.980	60.020
13	VESA 1280 × 1024	79.976	75.025

# Power management

## ENERGY STAR

As an ENERGY STAR® Partner, Gateway has determined that this product meets the ENERGY STAR guidelines for energy efficiency.

This monitor complies with the EPA's International ENERGY STAR Program, which is a program designed to encourage manufacturers of computer equipment to build circuitry into their products to reduce energy consumption during time of non-use.

## Energy declaration

When connected to a computer that supports the VESA Display Power Management Signaling (DPMS) Protocol, the monitor can conserve significant energy by reducing power consumption during periods of non-use. When your computer goes into the energy saving mode, the monitor will then enter the Active Off mode (sleep). In the Active Off mode the Power LED will still show orange.

Use these conventions and the power can be reduced to the following levels:

VESA State	LED Indicator	Power Consumption
On	Blue	40 W
Active Off	Orange	≤ 2 W

To “wake” the monitor when it is in Active Off mode, move the mouse or press any keyboard key.

Access the power management options in the Control Panel to change the period of time after which the monitor enters these low power states.

# Maintenance

To keep the monitor in optimal working order:

- Do not block the ventilation holes.
- Do not expose the monitor to rain or use near water.
- Keep the monitor away from radiators or heat vents.
- Keep the monitor out of direct sunlight.

To clean the monitor, use a soft cloth slightly moistened with water only. Wipe the cabinet, screen, and controls.

## Caution



Do not use any type of abrasive pad or glass cleaner. You will permanently scratch the screen.

# Troubleshooting

If you have problems with the monitor, the information in this troubleshooting section may help you solve them.

## Important



Make sure that the monitor has warmed up for approximately 30 minutes before making any judgments about the picture quality.

## No power

Make sure that the power cord is connected correctly to both the back of the monitor and the wall outlet. For more information about connecting the power cord, see “Connecting the monitor” on page 2.

## No picture

- Make sure that the power cord is connected correctly to both the back of the monitor and the wall outlet. For more information about connecting the power cord, see “Connecting the monitor” on page 2.
- Make sure that the video cable is connected securely to the back of the monitor and computer. For more information about connecting the video cable, see “Connecting the monitor” on page 2.
- Make sure that the monitor is turned on.
- If the power LED is orange:
  - Make sure that your computer is turned on.
  - Move the mouse or press any key on the keyboard to bring the monitor out of sleep mode.
  - Restart your computer with the monitor turned on.
  - Make sure that the video cable is not damaged.
  - Check the ends of the video cable for any pins that might be bent or pushed in.
- Turn off the monitor and unplug the video cable from the back of your computer. Turn the monitor back on and wait for ten seconds. If the monitor is functioning correctly, a “No Signal” message appears. For more information about connecting the video cable, see “Connecting the monitor” on page 2.

## Display colors are wrong

- Press the **Auto** button to automatically adjust the display image to the ideal settings.
- Restart your computer with the monitor turned on.
- Make sure that the video cable is connected securely to the back of the monitor and your computer. For more information about connecting the power cord, see “Connecting the monitor” on page 2.
- Make sure that the video cable is not damaged.
- Check the ends of the video cable for any pins that might be bent or pushed in.

## Picture has shadows or “ghosts”

- Press the **Auto** button to automatically adjust the display image to the ideal settings.
- Remove any extension cables or switchboxes.
- Make sure that the video cable is connected securely to the back of the monitor and your computer. For more information about connecting the power cord, see “Connecting the monitor” on page 2.
- Make sure that the video cable is not damaged.
- Check the ends of the video cable for any pins that might be bent or pushed in.

## Color is not uniform

- Press the **Auto** button to automatically adjust the display image to the ideal settings.
- Make sure that the monitor warms up for at least 30 minutes before making a final judgment about color uniformity or brightness.

## Image is not sized or centered correctly

- Press the **Auto** button to automatically adjust the display image to the ideal settings.
- Use the position controls to adjust the image. For instructions on how to adjust the display image position, see “Adjusting monitor settings” on page 9.

## The monitor has pixels that are always dark or too bright

This condition is normal and inherent in the TFT technology used in active-matrix LCD screens. Gateway’s inspection standards keep these to a minimum. If you feel these pixels are unacceptably numerous or dense on your display, contact Gateway Technical Support to identify whether a repair or replacement is justified based on the number of pixels affected.

# Specifications

Specifications are subject to change without notice or obligation. Many products for Gateway and its subsidiaries are custom engineered by our suppliers to Gateway specifications and may vary from similarly marketed products.

## 15-inch monitor

Panel size	15 inches (diagonal)
Panel type	15-inch viewable TFT with anti-glare coating
Pixel resolution	1024 × 768 (native)
Pixel pitch	0.0117 × 0.0117 inches (0.297 mm × 0.297 mm)
Aspect ratio	5:4
Brightness and contrast ratio	250 cd/m <sup>2</sup> , 400:1
Viewing angles	130° horizontal, 100° vertical
Response time	16 ms
Lamp type/life	50,000 hours
Colors	16.2 million
OSD languages	English, German, French, Spanish, Italian, Japanese
Connections and inputs	Analog (VGA): 15-pin mini d-sub VGA Digital (DVI-D): 24-pin DVI-D AC Power input
Cables	15-pin mini d-sub analog VGA (included) 24-pin DVI-D (not included)
Power consumption	Normal operation: 45W Off (power-save): 2W
Power input	100-240 VAC, 50/60 Hz
Power management	Energy Star®
Certifications	UL, cUL, FCC Class B, NOM,CE, TUV/GS, VCCI, TCO'99
Wall mount bracket	VESA 4 × 3.937 inches (4 × 100 mm)
Dimensions	13.71 × 13.60 × 5.67 inches (34.82 × 34.54 × 14.40 cm) with stand

## 17-inch monitor

<b>Panel size</b>	17 inches (diagonal)
<b>Panel type</b>	17-inch viewable TFT with anti-glare coating
<b>Pixel resolution</b>	1280 × 1024 (native)
<b>Pixel pitch</b>	0.0104 × 0.0104 inches (0.264 mm × 0.264 mm)
<b>Aspect ratio</b>	5:4
<b>Brightness and contrast ratio</b>	250 cd/m <sup>2</sup> , 450:1
<b>Viewing angles</b>	140° horizontal, 130° vertical
<b>Response time</b>	16 ms
<b>Lamp type/life</b>	50,000 hours
<b>Colors</b>	16.2 million
<b>OSD languages</b>	English, German, French, Spanish, Italian, Japanese
<b>Connections and inputs</b>	Analog (VGA): 15-pin mini d-sub VGA Digital (DVI-D): 24-pin DVI-D AC Power input
<b>Cables</b>	15-pin mini d-sub analog VGA (included) 24-pin DVI-D (not included)
<b>Power consumption</b>	Normal operation: 45W Off (power-save): 2W
<b>Power input</b>	100-240 VAC, 50/60 Hz
<b>Power management</b>	Energy Star®
<b>Certifications</b>	UL, cUL, FCC Class B, NOM, CE, TUV/GS, VCCI, TCO'99
<b>Wall mount bracket</b>	VESA 4 × 3.937 inches (4 × 100 mm)
<b>Dimensions</b>	14.97 × 15.26 × 6.55 inches (38.02 × 38.76 × 16.64 cm) with stand

# 19-inch monitor

<b>Panel size</b>	19 inches (diagonal)
<b>Panel type</b>	19-inch viewable TFT with anti-glare coating
<b>Pixel resolution</b>	1280 × 1024 (native)
<b>Pixel pitch</b>	0.0116 × 0.0116 inches (0.294 mm × 0.294 mm)
<b>Aspect ratio</b>	5:4
<b>Brightness and contrast ratio</b>	250 cd/m <sup>2</sup> , 450:1
<b>Viewing angles</b>	140° horizontal, 130° vertical
<b>Response time</b>	16 ms
<b>Lamp type/life</b>	50,000 hours
<b>Colors</b>	16.2 million
<b>OSD languages</b>	English, German, French, Spanish, Italian, Japanese
<b>Connections and inputs</b>	Analog (VGA): 15-pin mini d-sub VGA Digital (DVI-D): 24-pin DVI-D AC Power input
<b>Cables</b>	15-pin mini d-sub analog VGA (included) 24-pin DVI-D (not included)
<b>Power consumption</b>	Normal operation: 45W Off (power-save): 2W
<b>Power input</b>	100-240 VAC, 50/60 Hz
<b>Power management</b>	Energy Star®
<b>Certifications</b>	UL, cUL, FCC Class B, NOM,CE, TUV/GS, VCCI, TCO'99
<b>Wall mount bracket</b>	VESA 4 × 3.937 inches (4 × 100 mm)
<b>Dimensions</b>	16.78 × 16.66 × 7.33 inches (42.62 × 42.32 × 18.62 cm) with stand



# Appendix A

## Safety, Regulatory, and Legal Information

- Safety information
- Regulatory statements
- Notices



# Important safety information

Your Gateway system is designed and tested to meet the latest standards for safety of information technology equipment. However, to ensure safe use of this product, it is important that the safety instructions marked on the product and in the documentation are followed.

## Warning



Always follow these instructions to help guard against personal injury and damage to your Gateway system.

## Setting up your system

- Read and follow all instructions marked on the product and in the documentation before you operate your system. Retain all safety and operating instructions for future use.
- Do not use this product near water or a heat source such as a radiator.
- Set up the system on a stable work surface.
- The product should only be operated from the type of power source indicated on the rating label.
- If your product has a voltage selector switch, make sure that the switch is in the proper position for your area. The voltage selector switch is set at the factory to the correct voltage.
- Openings in the monitor case are provided for ventilation. Do not block or cover these openings. Make sure you provide adequate space, at least 6 inches (15 cm), around the system for ventilation when you set up your work area. Never insert objects of any kind into the monitor ventilation openings.
- Some products are equipped with a three-wire power cord to make sure that the product is properly grounded when in use. The plug on this cord will only fit into a grounding-type outlet. This is a safety feature. If you are unable to insert the plug into an outlet, contact an electrician to install the appropriate outlet.
- If you use an extension cord with this system, make sure that the total ampere rating on the products plugged into the extension cord does not exceed the extension cord ampere rating.
- If your system is fitted with a TV Tuner, cable, or satellite receiver card, make sure that the antenna or cable system is electrically grounded to provide some protection against voltage surges and buildup of static charges.

## Care during use

- Do not walk on the power cord or allow anything to rest on it.
- Do not spill anything on the system. The best way to avoid spills is to avoid eating and drinking near your system.
- Do not expose the monitor to rain or use near water. If the monitor does get exposed to moisture, unplug it and allow it to dry for 24 hours. Call Gateway Technical Support for advice on whether the monitor is safe to turn back on.
- When the monitor is turned off, a small amount of electrical current still flows through the monitor. To avoid electrical shock, always unplug all power cables and modem cables from the wall outlets before cleaning the system.
- Unplug the system from the wall outlet and refer servicing to qualified personnel if:
  - The power cord or plug is damaged.
  - Liquid has been spilled into the system.
  - The system does not operate properly when the operating instructions are followed.
  - The system was dropped or the cabinet is damaged.
  - The system performance changes.

### Warning



To prevent electric shock, never remove the cover. No user serviceable parts inside. Refer servicing to qualified service personnel.

## Replacement parts and accessories

Use only replacement parts and accessories recommended by Gateway.

### Warning



Do not use Gateway products in areas classified as hazardous locations. Such areas include patient care areas of medical and dental facilities, oxygen-laden environments, or industrial facilities.

# Regulatory compliance statements

## United States of America

### Federal Communications Commission (FCC) Unintentional emitter per FCC Part 15

This device has been tested and found to comply with the limits for a Class B digital device, pursuant to Part 15 of the FCC rules. These limits are designed to provide reasonable protection against harmful interference in a residential installation. This equipment generates, uses, and can radiate radio frequency energy and, if not installed and used in accordance with the instructions, may cause harmful interference to radio or television reception. However, there is no guarantee that interference will not occur in a particular installation. If this equipment does cause interference to radio and television reception, which can be determined by turning the equipment off and on, the user is encouraged to try to correct the interference by one or more of the following measures:

- Reorient or relocate the receiving antenna
- Increase the separation between the equipment and receiver
- Connect the equipment to an outlet on a different circuit from that to which the receiver is connected
- Consult the dealer or an experienced radio/TV technician for help.

**Compliance Accessories:** The accessories associated with this equipment are: shielded video cable. These accessories are required to be used in order to ensure compliance with FCC rules.

### FCC declaration of conformity

#### Responsible party:

Gateway, Inc.  
14350 Myford Road  
Irvine, CA 92606 USA

This device complies with Part 15 of the FCC Rules. Operation of this device is subject to the following two conditions: (1) this device may not cause harmful interference, and (2) this device must accept any interference received, including interference that may cause undesired operation.

#### Caution



Changes or modifications not expressly approved by Gateway could void the FCC compliance and negate your authority to operate the product.

### California Proposition 65 Warning

#### Warning



This product contains chemicals, including lead, known to the State of California to cause cancer, birth defects or reproductive harm.

### Mercury Warning

#### Warning



(Hg) lamp(s) inside this product contain mercury and must be recycled or disposed of according to local, state, or federal laws.

# Canada

## Industry Canada (IC) Unintentional emitter per ICES-003

This digital apparatus does not exceed the Class B limits for radio noise emissions from digital apparatus as set out in the radio interference regulations of Industry Canada.

Le présent appareil numérique n'émet pas de bruits radioélectriques dépassant les limites applicables aux appareils numériques de Classe B prescrites dans le règlement sur le brouillage radioélectrique édicté par Industrie Canada.

## EPA ENERGY STAR



As an ENERGY STAR® Partner, Gateway has determined that this product meets the ENERGY STAR guidelines for energy efficiency when used with a computer equipped with a Display Power Management System.

# Notices

Copyright © 2005 Gateway, Inc.  
All Rights Reserved  
Gateway, Inc.

7565 Irvine Center Drive  
Irvine, CA 92618 USA  
All Rights Reserved

This publication is protected by copyright and all rights are reserved. No part of it may be reproduced or transmitted by any means or in any form, without prior consent in writing from Gateway.

The information in this manual has been carefully checked and is believed to be accurate. However, changes are made periodically. These changes are incorporated in newer publication editions. Gateway may improve and/or change products described in this publication at any time. Due to continuing system improvements, Gateway is not responsible for inaccurate information which may appear in this manual. For the latest product updates, consult the Gateway Web site at [www.gateway.com](http://www.gateway.com). In no event will Gateway be liable for direct, indirect, special, exemplary, incidental, or consequential damages resulting from any defect or omission in this manual, even if advised of the possibility of such damages.

In the interest of continued product development, Gateway reserves the right to make improvements in this manual and the products it describes at any time, without notices or obligation.

## Trademark Acknowledgments

Gateway and the Black-and-White Spot Design are trademarks or registered trademarks of Gateway, Inc. in the U.S. and other countries. SpotShop, Spotshop.com, and Your:)Ware are trademarks of Gateway, Inc. Intel, Intel Inside logo, and Pentium are registered trademarks and MMX is a trademark of Intel Corporation. Microsoft, MS, MS-DOS, and Windows are trademarks or registered trademarks of Microsoft Corporation. All other product names mentioned herein are used for identification purposes only, and may be the trademarks or registered trademarks of their respective companies.





MAN MON GW FPD1760 USR GDE R0 1/05

