



**creating CDs with your
recordable CD drive**

Contents

About creating CDs	1
Identifying drive types	1
Identifying types of writable CDs	3
Where to buy writable CDs	4
Creating data CDs	5
Creating music CDs	9
Copying CDs	13
Copying a CD using one drive	13
Copying a CD using two drives	15
Help resources	17
Online help	17
HelpSpot	17

About creating CDs

You can use your CD drive to enjoy a wide variety of multimedia features, such as listening to music CDs, watching DVDs, and creating your own data and music CDs.

This guide provides basic information about CD drive types and writable CDs. It also provides instructions for creating your own CDs using Roxio Easy CD Creator.

Important



We recommend that you do not use your computer for other tasks while creating CDs.

Important



If you record copyrighted material on a CD, you need permission from the copyright owner. Otherwise, you may be violating copyright law and be subject to payment of damages and other remedies. If you are uncertain about your rights, contact your legal advisor.

Identifying drive types

Your Gateway computer contains one or more of the following drive types.

Important



The bezel on your computer case may hide the drive logo. To find out which drive type is installed in your computer, check your computer's specifications. See your user's guide for more information about finding your specifications.

Look on the front of the drive for one of the following logos:

CD drive



Use a CD drive for installing programs, playing audio CDs, and accessing data.

You cannot use this drive to create CDs.

CD-RW drive



Use a CD-RW drive for installing programs, playing audio CDs, recording files and music, and accessing data.

Use this drive for recording music and data to CD-R or CD-RW discs. For more information about types of writable CDs, see “Identifying types of writable CDs” on page 3.

DVD drive



Use a DVD drive for installing programs, playing audio CDs and DVDs, and accessing data.

You cannot use this drive to create CDs.

**Combination
DVD/CD-RW
drive**



Use a combination DVD/CD-RW drive for installing programs, playing audio CDs and DVDs, and accessing data.

Use this drive for recording music and data to CD-R or CD-RW discs. For more information about types of writable CDs, see “Identifying types of writable CDs” on page 3.

Identifying types of writable CDs

There are two types of writable CDs:

- *CD-R discs* are recordable, but not rewritable. If you leave the recording session open when you record a CD-R disc, you can add additional files to the CD-R disc in another recording session. You cannot erase a CD-R disc or record over existing files.
- *CD-RW discs* are recordable and rewritable. You can use CD-RW discs like you would use 3.5-inch diskettes or a hard drive, recording over or adding to the CD multiple times.

When to use CD-R discs

When you want to store data that does not need to be changed or erased, use a CD-R disc. For example, use a CD-R disc when making music CDs, permanently saving large project files, and archiving home records, photos, or videos. CD-R discs are typically less expensive than CD-RW discs.

CD-R discs are available in two capacities: 650 MB (74 minutes of music) and 700 MB (80 minutes of music).

When to use CD-RW discs

When data may change or need to be erased, use a CD-RW disc. For example, use a CD-RW disc when saving project files that are a work in progress, erasing files that are outdated or confidential, or updating files that have changed. Also, before recording on a CD-RW disc consider where you may play the CD. Many home or car stereo CD players do not play CD-RW discs.

CD-RW discs are available in a 650 MB (74 minutes of music) capacity.

Where to buy writable CDs

Gateway offers writable CDs and other computer supplies and accessories for your computer. To view and order products, go to the *Accessory Superstore* at www.gateway.com or visit a Gateway store. To order supplies and accessories by telephone, call Gateway Add-ons at 800-846-2080.

Creating data CDs

Use Roxio Easy CD Creator to create data CDs. Data CDs are ideal for backing up important files such as tax records, letters, MP3 files, or photos.

Important



You must have a CD-RW or combination DVD/CD-RW drive in your computer to create a CD. To determine the type of drive in your computer, examine the drive tray's plastic cover and compare the logo to those listed in "Identifying drive types" on page 1. To be able to create a CD, the imprint must say *Recordable* or *Rewritable*.



To create a data CD:

- 1 Insert a writable CD into your CD-RW or combination DVD/CD-RW drive.
- 2 If a *CD Drive* dialog box opens, click **Create a CD using Roxio Easy CD Creator**, then click **OK**. The *Select a Project* window opens.

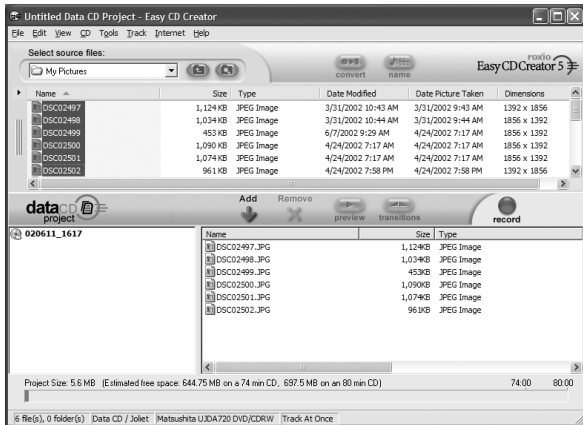
- OR -

If a dialog box does not open, click **Start, All Programs, Roxio Easy CD Creator**, then click **Project Selector**. The *Select a Project* window opens.

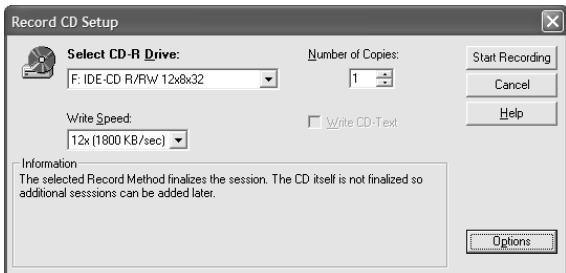


- 3 Move your pointer over **make a data CD**, then click **dataCD project**. The *Easy CD Creator* window opens.
- 4 Click the arrow button to open the **Select Source Files** list, then click the folder (drive) where your files are located. If you do not see the folder you want, browse through the folders displayed below the *Select Source Files* list.

- 5 Click the file you want to record (hold down the CTRL or SHIFT key when you click to select multiple files), then click **Add**.



- 6 After you have added all of your files, click **record**. The *Record CD Setup* dialog box opens.



- 7 Click **Start Recording**.

Creating music CDs

Use Roxio Easy CD Creator to create music CDs from other music CDs or MP3 files.

Important



You must have a CD-RW or combination DVD/CD-RW drive in your computer to create a CD. To determine the type of drive in your computer, examine the drive tray's plastic cover and compare the logo to those listed in "Identifying drive types" on page 1. To be able to create a CD, the imprint must say *Recordable* or *Rewritable*.



To create music CDs:

- 1 Insert a writable CD into your CD-RW or combination DVD/CD-RW drive.

Tips & Tricks



Most car stereos read CD-R discs, but do not read CD-RW discs.

- 2 If a *CD Drive* dialog box opens, click **Create a CD using Roxio Easy CD Creator**, then click **OK**. The *Select a Project* window opens.

- OR -

If a dialog box does not open, click **Start, All Programs, Roxio Easy CD Creator**, then click **Project Selector**. The *Select a Project* window opens.



- 3 Move your pointer over **make a music CD**, then click **musicCD project**. The *Easy CD Creator* window opens.
- 4 Click the arrow button to open the **Select Source Files** list, then click the folder (drive) where your files are located. If you do not see the folder you want, browse through the folders displayed below the *Select Source Files* list.

- 5 Click the file you want to record (hold down the CTRL or SHIFT key when you click to select multiple files), then click **Add**.



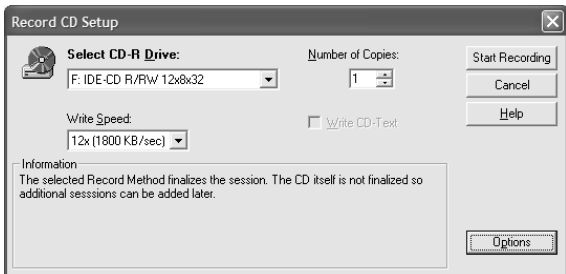
Tips & Tricks



You can add any combination of music tracks or MP3 files to a music CD project. You can add up to 99 tracks and files, or up to 650 MB (74-minute CD) or 700 MB (80-minute CD) of tracks and files to a music CD project.

- 6 Click the **New CD Title** box and type a CD title, then click the **Artist Name** box and type an artist name.

- 7 After you have added the music files, title, and name, click **record**. The *Record CD Setup* dialog box opens.



- 8 Click **Start Recording**. When the recording is complete, you may see a *Record Complete* dialog box. Select the appropriate option.

Copying CDs

Easy CD Creator can make backup copies of almost any type of CD.

Important



You must have a CD-RW or combination DVD/CD-RW drive in your computer to create a CD. To determine the type of drive in your computer, examine the drive tray's plastic cover and compare the logo to those listed in "Identifying drive types" on page 1. To be able to create a CD, the imprint must say *Recordable* or *Rewritable*.

Copying a CD using one drive

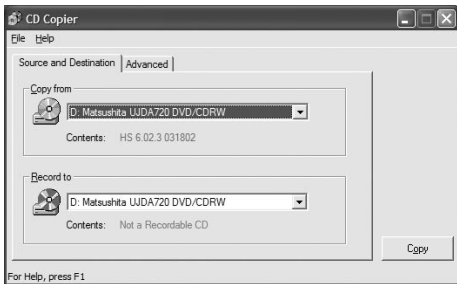
If you have only one CD drive and that drive can record CDs, you can use Easy CD Creator to create a CD image of your source CD on your hard drive, then record that image to a writable CD.



To copy a CD using one drive:

- 1** Insert the CD you want to copy into your CD-RW or combination DVD/CD-RW drive.
- 2** If a dialog box opens, click **Take no action**.
- 3** Click **Start, All Programs, Roxio Easy CD Creator**, then click **Project Selector**. The *Select a Project* window opens.

- 4 Move your pointer over **CD copier**, then click **CD copier**. The *CD Copier* window opens.



- 5 On the **Source and Destination** tab, click the arrow button to open the **Copy from** list, then click the CD-RW or combination DVD/CD-RW drive.
- 6 Click the arrow button to open the **Record to** list, then click the CD-RW or combination DVD/CD-RW drive.
- 7 Click **Copy**. CD Copier copies the source CD to your hard drive, prompts you to insert the writable CD, then copies from the hard drive to the writable CD.

Copying a CD using two drives

If you have two CD drives and one of them can record CDs, you can use Easy CD Creator to copy your source CD to your writable CD without creating a CD image on your hard drive.



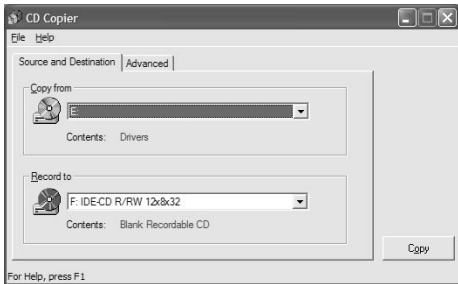
To copy CDs using two drives:

- 1** Insert the CD you want to copy into your CD or DVD drive.
- 2** If a dialog box opens, click **Take no action**.
- 3** Insert a writable CD into your CD-RW or combination DVD/CD-RW drive.
- 4** If a *CD Drive* dialog box opens, click **Create a CD using Roxio Easy CD Creator**, then click **OK**. The *Select a Project* window opens.

- OR -

If a dialog box does not open, click **Start, All Programs, Roxio Easy CD Creator**, then click **Project Selector**. The *Select a Project* window opens.

- 5 Move your pointer over **CD copier**, then click **CD copier**. The *CD Copier* window opens.



- 6 On the **Source and Destination** tab, click the arrow button to open the **Copy from** list, then click the drive that contains the source CD.
- 7 Click the arrow button to open the **Record to** list, then click the drive that contains the writable CD (this is your recordable drive).
- 8 Click **Copy**.

Help resources

Online help

For more information about using Easy CD Creator, see the Easy CD Creator online help.



To open Easy CD Creator online help:

- Click **Start, All Programs, Roxio Easy CD Creator, Applications, Easy CD Creator**, then click **Help**.

HelpSpot

Your computer may include *HelpSpot*[™], an easily accessible collection of help information, troubleshooters, instructional videos, and automated support. HelpSpot includes a video tutorial about making CDs.



To start the HelpSpot CD video:

- 1 Click **Start**, then click **Help and Support**. HelpSpot opens.
- 2 Click **Video Tutorials**, click **Using your computer** in the left window, then click **Making your own CDs** in the right window. The video starts.

MAN CDR CREATING CDRW GDE R0 6/02



8508700